



FIREWISE LANDSCAPING

TIPS ON HOW TO MAKE GOOD CHOICES AND CHANGES

Wendy Hanson Mazet
Extension Plant Diagnostician
ISA Certified Arborist WE-8466A





FIRE-WISE LANDSCAPING



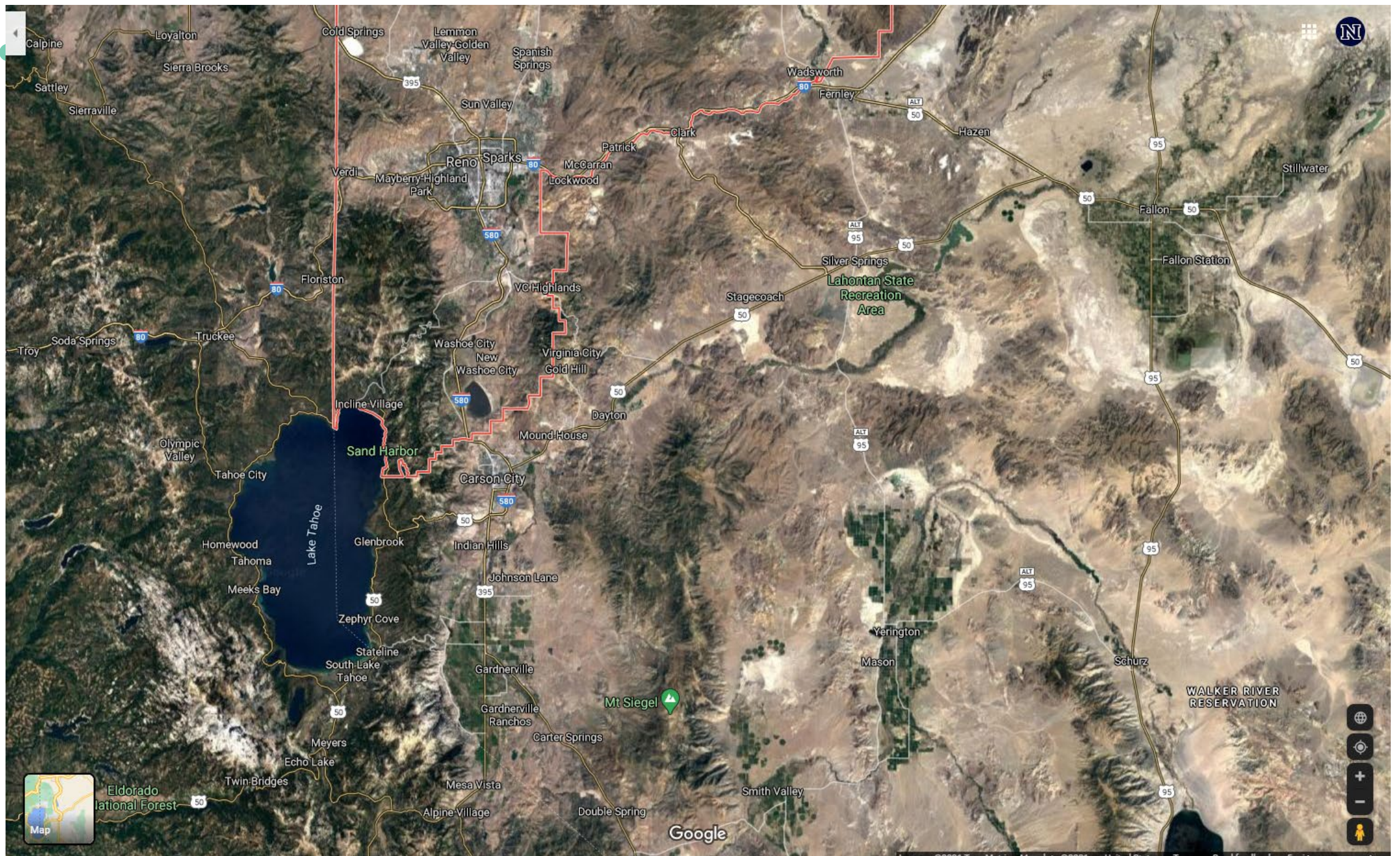
FIRESCAPING USES FIRE-RESISTANT LANDSCAPE DESIGNS AND MATERIALS, IN CONJUNCTION WITH CAREFUL SELECTION OF PLANTS, TO STRATEGICALLY RESIST THE SPREAD OF FIRE TO YOUR HOME.



WHAT WE WILL COVER

- Where we live
- Our goals
- What we are faced with and history
- Landscape firewise fundamentals
- Our plant zones
- Good plant choices (only a small few...)
 - Perennials
 - Shrubs
 - Trees







DEFENSIBLE SPACE MANAGEMENT ZONES

- **Zone 1**
 - **(0-5 feet from structure)**
 - Is the area nearest the home and other structures – This zone requires maximum hazard reduction.
- **Zone 2**
 - **(5-30 feet from structure)**
 - Is a transitional area of fuels reduction between Zones 1 and 3.
- **Zone 3**
 - **(more than 30 feet!)**
 - Is the area farthest from the home. It extends from the edge of Zone 2 to your property boundaries.





ALL PLANTS WILL BURN IF CONDITIONS ARE RIGHT.

All Plants will burn if Conditions are right.

“” Fire resistant plants share characteristics:

- are deciduous in nature
- have green stems with higher moisture content
- are non-resinous (i.e., stems, leaves, or needles that are not resinous, oily, or waxy).
- have a high moisture content in their leaves
- have little seasonal buildup of dead leaf material
- have open branching habits
- have low, compact growth form





NOVEMBER 7, 2020
PINEHAVEN FIRE
ANDY BARRON
RENO GAZZET JOURNAL





MAKING CHANGES





LANDSCAPE DESIGN FOCUS IN THE 0-20 FEET AREA

- Use rock, decomposed granite, mulch that has a low combustibility, flower beds and gardens as ground cover for bare spaces and as effective firebreaks.
- Choose fire-retardant plant species (herbaceous) that resist ignition such as bulbs, nonwoody perennials, and succulents.
- Select fire-resistant shrubs such as hedging roses, bush honeysuckles, currant, cotoneaster, sumac and quince.



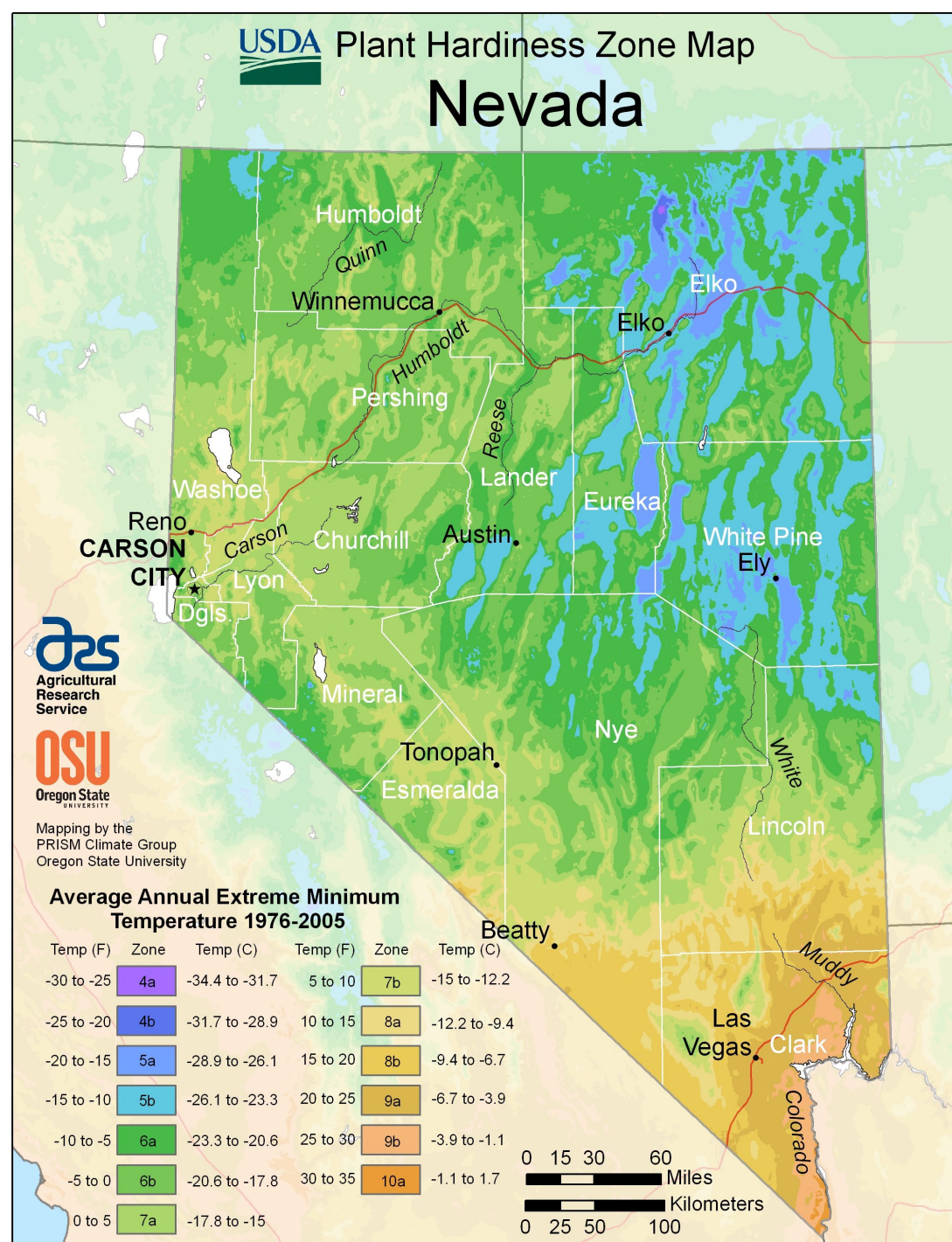




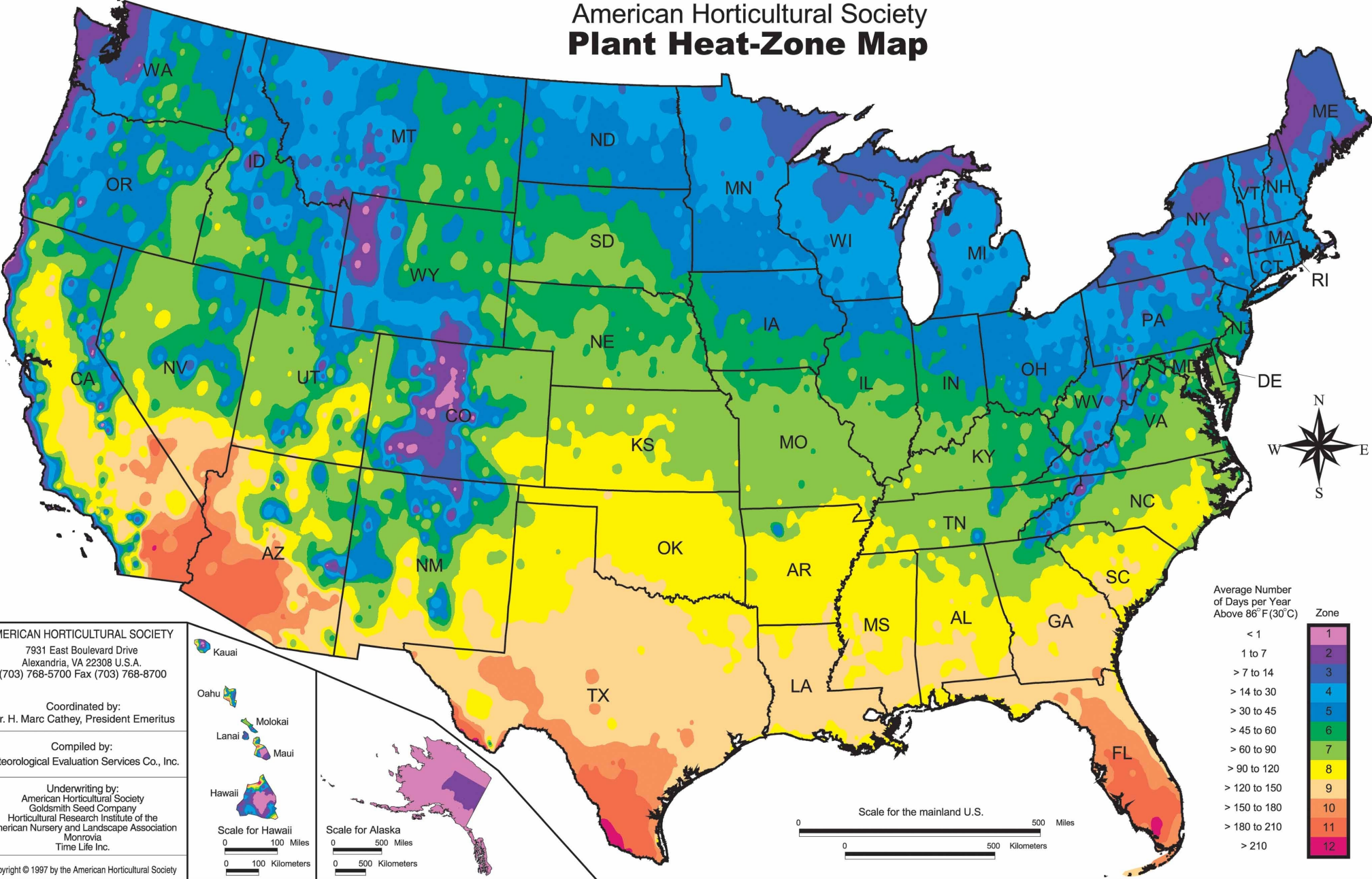
KNOW YOUR ZONE

Average Annual Extreme Minimum Temperature 1976-2005

Temp (F)	Zone	Temp (C)	Temp (F)	Zone	Temp (C)
-30 to -25	4a	-34.4 to -31.7	5 to 10	7b	-15 to -12.2
-25 to -20	4b	-31.7 to -28.9	10 to 15	8a	-12.2 to -9.4
-20 to -15	5a	-28.9 to -26.1	15 to 20	8b	-9.4 to -6.7
-15 to -10	5b	-26.1 to -23.3	20 to 25	9a	-6.7 to -3.9
-10 to -5	6a	-23.3 to -20.6	25 to 30	9b	-3.9 to -1.1
-5 to 0	6b	-20.6 to -17.8	30 to 35	10a	-1.1 to 1.7
0 to 5	7a	-17.8 to -15			



American Horticultural Society Plant Heat-Zone Map



AMERICAN HORTICULTURAL SOCIETY
7931 East Boulevard Drive
Alexandria, VA 22308 U.S.A.
(703) 768-5700 Fax (703) 768-8700

Coordinated by:
Dr. H. Marc Cathey, President Emeritus

Compiled by:
Meteorological Evaluation Services Co., Inc.

Underwriting by:
American Horticultural Society
Goldsmith Seed Company
Horticultural Research Institute of the
American Nursery and Landscape Association
Monrovia
Time Life Inc.

Copyright © 1997 by the American Horticultural Society

Average Number of Days per Year Above 86° F (30° C)

Zone
1
2
3
4
5
6
7
8
9
10
11
12



Western Sunset Garden Book





Western Sunset Garden Zoning Map

- ZONE 1A: Coldest mountain and intermountain areas of the contiguous states and Southwestern British Columbia
- ZONE 1B: Coldest Eastern Rockies and plains climate of Colorado, Wyoming, Montana, and Southern Alberta
 - January temperatures from 0 to 12°F (−18 to −11°C), with extremes between −30 and −50°F (−34 to −46°C).
- ZONE 2A: Cold mountain and intermountain areas
 - Winter temperatures here usually hover between 10 and 20°F (−12 to −7°C) at night, with drops between −20 and −30°F (−29 and −34°C) every few years.
- ZONE 2B: Warmer-summer intermountain climate
 - Winter temperatures are milder than in neighboring Zone 2a, minimums averaging from 12 to 22°F (−11 to −6°C), with extremes in the −10 to −20°F (−23 to −29°C) range.





PH







PLANT CHOICES

Munstead Lavender, *Lavandula angustifolia* 'Munstead'
Slowly reaches 12 to 18 in. tall and wide.



Fat Bud French Lavender, *Lavandula x intermedia* 'Grosso'
Moderate growing; reaches 3 to 3½ ft. tall and wide.





ZONE 1 (0–5 FEET)

- This is the area nearest the home and other structures.
 - This zone requires maximum hazard reduction.
 - The area should be considered hardscape or non flammable materials.
 - If plants are used they should be considered vegetative, high water content and dead material should always be removed.
-
- **AVOID:**
 - Any plantings building vents.
 - Plants that are highly aromatic, have waxy coating on the leaves, or have fine feathery foliage or flat, narrow needles, such as rosemary, juniper arborvitae (thuja) hollies, and yew.





BULBS 1

- Daffodil
 - Color – yellow, white, salmon, pink, orange and bi-colored
 - Type – True Bulb
 - Height - 6" -2'
 - Spacing – 3"x3"
 - Hardiness zone 4 - 8
 - Flowers in- Spring





BULBS 2

- Single Snowdrops
- (*Galanthus nivalis*)
 - Color – white
 - Type
 - Height - 6 - 8 in.
 - Spacing – 3"x 3"
 - Hardiness zone 4 - 8
 - Flowers in- Spring (they wander)
 - Flowers single and double





BULBS 3

- Grape Hyacinths
- (Muscari)
 - Color – purple & white
 - Type
 - Height - 6 - 8 in.
 - Spacing – 3"x 3"
 - Hardiness zone 4 - 8
 - Flowers in- Spring (they wander)





BULBS 4

- Bearded Iris
 - Color - blue, pink, reddish, white, purples, bi (tri) -colors
 - Type - Rhizomes
 - Height - 1 - 4 ft.
 - Spacing – 3"x 3"
 - Hardiness zone 4 - 8
 - Flowers in- Late Spring







BULBS CONTINUED

- Gold Variegated Sweet Iris
 - *Iris pallida*
 - Flower color - light purple
 - Type - Rhizomes
 - Height - 3'
 - Spacing – 12"
 - Hardiness zone 4 - 8
 - Flowers in- Late Spring





HERBACEOUS PERENNIAL 1

- Red-Leafed Mukdenia
- Scientific Name
 - *Mukdenia rossii* 'Crimson Fans'
- Flower color – White
- Height - 2 - 3'
- Spacing – 12 - 24"
- Months in Flower – summer
- Light needs – Partial shade





HERBACEOUS PERENNIAL 2

- Purple Emperor & Autumn Joy
- Scientific Name
 - Sedum
 - Flower color – white to pink
 - Height - 10" – 20"
 - Spacing – 15"
 - Hardiness zone 4 -9
 - Months in Flower –Summer





HERBACEOUS PERENNIAL 3

- SunSparkler® Dazzleberry Sedum
 - Scientific Name
 - Stonecrop
 - Flower color – Pink/purple
 - Height - 6"
 - Spacing – 2'
 - Months in Flower –Summer





HERBACEOUS PERENNIAL 4

- Fire Spinner Ice Plant
 - Scientific Name
 - Delosperma
 - Flower color – Orange/purple
 - Height - 1" – 1.5"
 - Spacing – 1' – 2'
 - Hardiness zone – 5 -8
 - Months in Flower –Summer





ICE PLANT

Yellow Hardy



Delmara Orange



Table Mountain





HERBACEOUS PERENNIAL 5

- Hens And Chicks
- Black - Grey Ghost – Sunset - Pekinese
 - Scientific Name
 - Sempervivum
 - Flower color – red, whites
 - Height - 4" – 6"
 - Spacing – 12"
 - Months in Flower – summer
 - Light needs – full sun





HERBACEOUS PERENNIALS 6

- Chameleon Plant
- Scientific Name - *Houttuynia cordata*
 - Color – white
 - Height - 6" – 1.8"
 - Spacing – Spreader
 - Hardiness zone 4 - 8
 - Months in Flower – Summer
 - Light needs – Partial to full sun





HERBACEOUS PERENNIALS 7

- Sand Strawberry
- Scientific Name - *Fragaria × chiloensis*
 - Color – white
 - Height - 3” – 6”
 - Spacing – Spreader
 - Hardiness zone 4 - 8
 - Months in Flower – Summer
 - Light needs – Partial to full sun





HERBACEOUS PERENNIALS 8

- St. John's Wort
- Scientific Name - *Hypericum calycinum*
 - Color – yellow
 - Height - 1' – 1.5'
 - Spacing – spreader
 - Hardiness zone 6 - 8
 - Months in Flower – Summer
 - Light needs – Partial to full sun





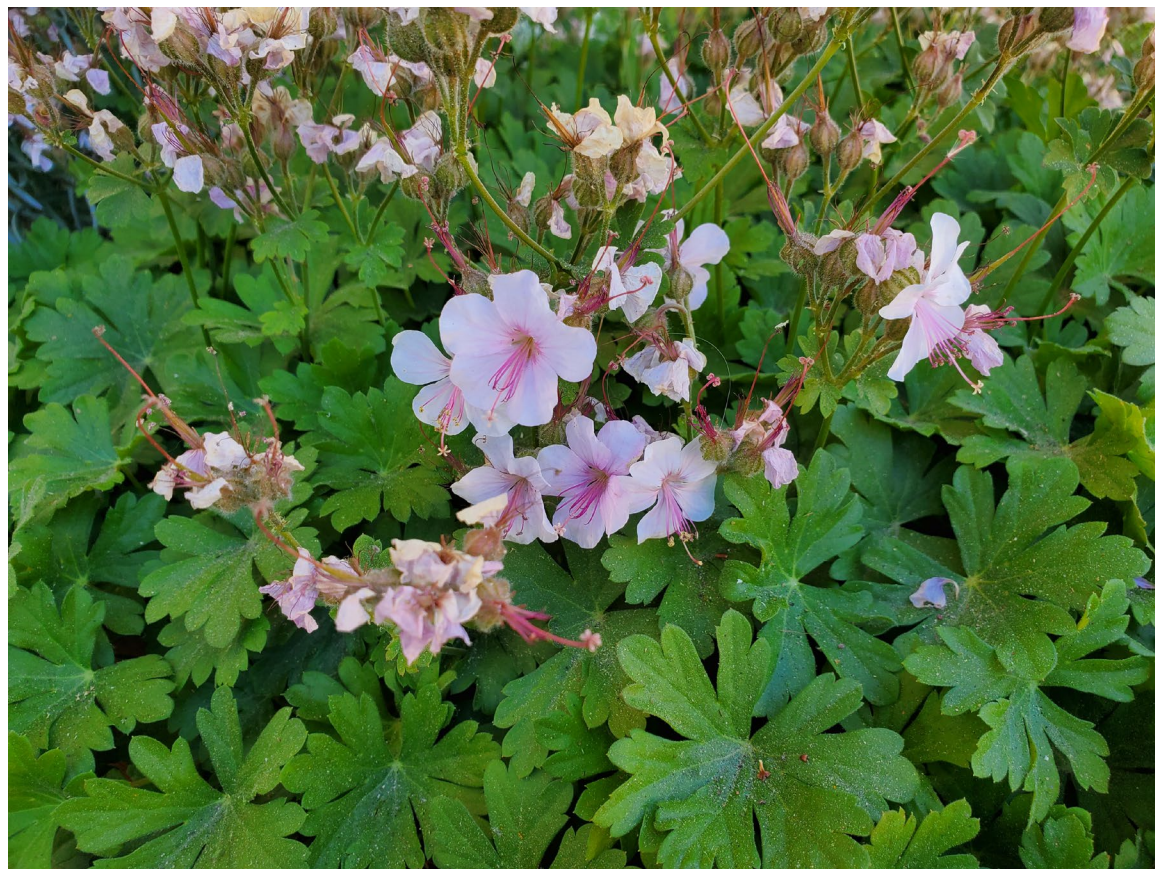
HERBACEOUS PERENNIALS 9

- Max Frei Bloody Cranesbill
- Scientific Name - *Geranium sanguineum* 'Max Frei'
 - Color – Purplish-pink
 - Height - 12"
 - Spacing – 18"
 - Hardiness zone 5 - 8
 - Months in Flower – Summer
 - Light needs – Partial to full sun





BIOKOVO GERANIUM





HERBACEOUS PERENNIAL 10

- Plumbago
 - Scientific Name
 - *Ceratogstigma plumbaginoides*
 - Color – purple colors
 - Height - 1'-2'
 - Spacing – 1'-2'
 - Hardiness zone
 - Months in Flower –Summer (Lasts longer in partial shade)
 - Great fall color





HERBACEOUS PERENNIAL 11

- Silver Ironweed
- Scientific Name
 - Vernonia
- Flower color – purple
- Height - 3' – 4'
- Spacing – 2'
- Hardiness zone – 6 - 10
- Months in Flower –Summer



Biokovo Geranium



HERBACEOUS PERENNIAL 12

- Red Jupiter's Beard
- Scientific Name
 - Red Valerian (Centranthus)
- Flower color – Pink
 - Height - 2' – 3'
 - Spacing – 3' – 4'
 - Months in Flower – Summer





HERBACEOUS PERENNIAL 13

- Silver Edged Horehound
 - Scientific Name - Marrubium
- Flower color – White
- Height - 10"
- Spacing – 2' – 4'
- Months in Flower –Summer
- Light needs – Full sun





HERBACEOUS PERENNIAL 14

- Penstemon Electric Blue
- Scientific Name
 - *Penstemon heterophyllus* Electric Blue
- Flower color – Blueish/purple
 - Height - 15" – 18"
 - Spacing – 12" – 24"
 - Months in Flower – Summer





HERBACEOUS PERENNIAL 15

- Yellow Pineleaf Beardtongue
 - Scientific Name
 - *Penstemon pinifolius*
 - Mersea Yellow
 - Flower color – Yellow
 - Height - 12"
 - Spacing – 15"
 - Months in Flower – summer





HERBACEOUS PERENNIAL 16

- Zauschneria, CA fuchsia
 - Scientific Name
 - *Epilobium canum*
 - Flower color –Red/orange
 - Height - 1.5 - 2'
 - Spacing – 2' – 4'
 - Months in Flower –Summer





HERBACEOUS PERENNIAL 17

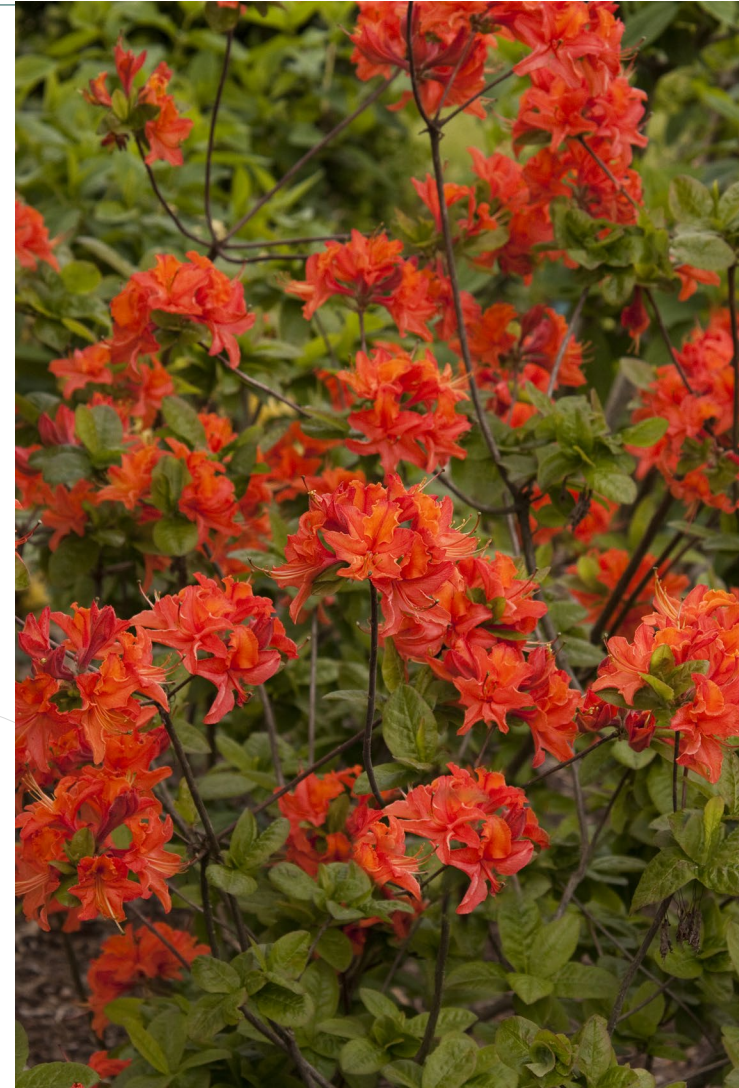
- Flowering Texas Yucca
 - Scientific Name
 - *Hesperaloe parviflora*
 - Flower color – Red, Yellow, Pink
 - Height - 3' – 6'
 - Spacing – 12 - 24"
 - Months in Flower – summer





AZALEA

- *Scientific name:*
 - *Azalea* x 'Mandarin Lights' (Northern Lights Hybrid)
- Light Requirements
 - Partial shade – like acidic soils
- Mature Height 3-5'
- Mature Spread 3-4'
- Growing zones 3 - 7
- Bloom Time
 - Late spring to early summer





SKUNKBUSH SUMAC

- *Scientific name:*
 - *Rhus trilobata* Nutt.
- Growing zones 4 - 9
- Light Requirements
 - Full Sun
- Mature Height 5-8'
- Mature Spread 6'
- Bloom Time
 - Late spring to early summer





SPIRREA

- *Scientific name:*
 - *Spiraea japonica*
- Growing zones 3 - 9
- Light Requirements
 - Full Sun
- Mature Height 2-9'
- Mature Spread 2-4'
- Bloom Time
 - Late spring to summer



RED TWIG DOGWOOD

- *Scientific name:*
 - *Cornus alba*
- Growing zones 2 - 8
- Light Requirements
 - Full Sun
- Mature Height 5-9'
- Mature Spread 5'
- Bloom Time
 - Summer





APACHE PLUM

- *Scientific name:*
 - *Fallugia paradoxa*
- Growing zones 4 - 9
- Light Requirements
 - Full Sun
- Mature Height 36-48" tall
- Mature Spread 48" wide
- Bloom Time
 - Late spring to mid fall





BUTTERFLY BUSH

- *Scientific name:*
 - *Buddleia davidii*
- Growing zones 5 - 9
- Light Requirements
 - Full Sun
- Mature Height 36-48" tall
- Mature Spread 24-36" wide
- Bloom Time
 - Early summer to late fall



CARYOPTERIS DARK KNIGHT

- *Scientific name:*
 - *Caryopteris clandonensis*
- Growing zones 5 - 9
- Light Requirements
 - Full Sun
- Mature Height 36-48" tall
- Mature Spread 48" wide
- Bloom Time
 - Early to late summer





NINEBARK

- *Scientific name:*
 - *Physocarpus opulifolius*
- Growing zones 3 - 8
- Light Requirements
 - Full Sun
- Mature Height 5 - 6'
- Mature Spread 3 - 4'
- Bloom Time
 - Late spring to early summer – berries in fall



PINK FLOWERING ALMOND

- *Scientific name:*
 - *Prunus glandulosa*
- Growing zones 4 - 9
- Light Requirements
 - Full Sun
- Mature Height 3-6'
- Mature Spread 4-5'
- Bloom Time
 - Late spring to early summer



HARRY LAUDER'S WALKING STICK

- *Scientific name:*
 - *Corylus avellane*
'Contorta'
- Growing zones 4 - 9
- Light Requirements
 - Full Sun
- Mature Height 6-8'
- Mature Spread 6-8'
- Bloom Time
 - Late spring to early summer





WESTERN SAND CHERRY

- *Scientific name:*
 - *Prunus besseyi*
- Growing zones 4 - 8
- Light Requirements
 - Full Sun
- Mature Height 48-60" tall
- Mature Spread 48" wide
- Bloom Time
 - Late spring to mid fall
- Cultivars shown
 - Pawnee Butter – much smaller



COLOR GUARD YUCCA

- *Scientific name:*
 - *Yucca filamentosa* 'Color Guard'
- Growing zones 4 - 10
- Light Requirements
 - Full Sun
- Mature Height 3-4'
- Mature Spread 3'
- Bloom Time
 - Mid summer





MAGNOLIA

- *Scientific name:*
 - *Magnolia*
- Growing zones 4a (5) - 9
- Light Requirements
 - Full Sun
- Mature Height 6 to 12'
- Mature Spread 12 to 20'



Magnolia x soulangiana Saucer Magnolia



FLOWERING DOGWOOD

- *Scientific name:*
 - *Cornus florida*
- Growing zones 5a - 9
- Light Requirements
 - Full Sun
- Mature Height 10 to 20'
- Mature Spread 10 to 20'



AMERICAN CRABAPPLE

- *Scientific name:*
 - *Malus coronaria*
- Growing zones 4a - 8
- Light Requirements
 - Full Sun
- Mature Height 10 to 30'
- Mature Spread 10 to 30'







LITTLE-LEAF LINDEN

- *Scientific name:*
 - *Tilia cordata*
- Growing zones 3b - 7
- Light Requirements
 - Full Sun
- Mature Height 40 to 70'
- Mature Spread 30 – 50'



cv. 'Greenspire'



TREES

- *Scientific name:*
 - *Acer rubrum*
- Growing zones 2b - 9
- Light Requirements
 - Full Sun
- Mature Height 40 to 70'
- Mature Spread 30 – 50'





FRUIT TREES

Ultra dwarf Fruit trees are good landscape options too.





THANK YOU



hansonw@unr.edu



Extension.unr.edu

